

3D Printing Price

Model for crowns and bridges

Code	Work from stl file	Works from digital impression
10000 3d printing - half model	5500AMD	7500AMD
10001 3d printing - full model	7500AMD	10000AMD

- The base model and dies are printed with a layer thickness of 0,05mm.
- We work with digital impressions made with 3shape trios/iTero/Plan Scan/CareStream/Sirona/3M intraoral scanners.
- The cost of the work includes the opposite jaw, all prepared teeth and adjacent sectioned teeth.
- Terms for the production of works from 2 to 3 working days.



Model with analogues

Code	Work from stl file	Works from digital impression
10002 3d printing - half model	5500AMD	7500AMD
10003 3d printing - full model	7500AMD	10000AMD
10004 Place analogue	—	1000AMD

- The base model and dies are printed with a layer thickness of 0,025mm.
- We work with digital impressions made with 3shape trios/iTero/Plan Scan/CareStream/Sirona/3M intraoral scanners.
- The cost of the work includes the opposite jaw, all prepared teeth and adjacent sectioned teeth.
- Terms for the production of works from 2 to 3 working days.



Orthodontic and diagnostic model

Code	Work from stl file	Works from digital impression
10005 Orthodontic and diagnostic model	7500AMD	10000AMD

- The base model is printed with a layer thickness of 0,025mm.
- We work with digital impressions made with 3shape trios/iTero/Plan Scan/CareStream/Sirona/3M intraoral scanners.
- Terms for the production of works from 2 to 3 working days.



Individual spoon

Code	Work from stl file	Works from digital impression
10006 Individual spoon	4000AMD	5000AMD

- The base model is printed with a layer thickness of 0,05mm.
- We work with digital impressions made with 3shape trios/iTero/Plan Scan/CareStream/Sirona/3M intraoral scanners.
- Terms for the production of works from 1 to 2 working days.



Clasp made of burn-out plastic for casting

Code	Work from stl file	Works from digital impression
10007 Clasps with clamps for casting	15000AMD	20000AMD
10008 Clasps with clamps for casting (including casting)	22500AMD	30000AMD
10009 Clasps with attachments for casting	19000AMD	25000AMD
10010 Clasps with attachments for casting (including casting)	26500AMD	35000AMD

- The clamp is printed with a layer thickness of 0,025mm.
- We work with digital impressions made with 3shape trios/iTero/Plan Scan/CareStream/Sirona/3M intraoral scanners.
- Terms for the production of works from 3 to 4 working days.



Frame for ceramic cladding made of burn-out plastic for casting

Code	Work from stl file	Works from digital impression
10011 Frame for casting	600AMD	1000AMD
10012 Frame for casting (including casting)	1600AMD	2000AMD

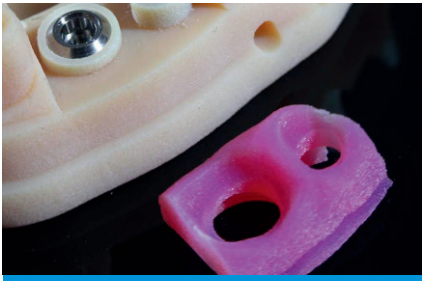
- The frame is printed with a layer thickness of 0,025mm.
- We work with digital impressions made with 3shape trios/iTero/Plan Scan/CareStream/Sirona/3M intraoral scanners.
- Terms for the production of works from 2 to 3 working days.



Gum mask

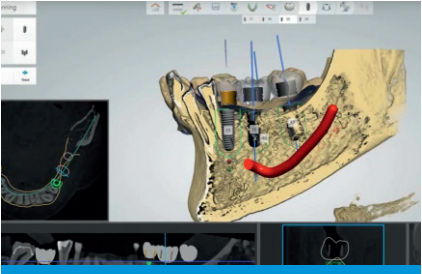
Code	Work from stl file	Works from digital impression
10023 Gums with a length of up to 3 teeth	1200AMD	1500AMD
10024 Gums with a length of 3 to 6 teeth	2300AMD	3000AMD
10025 Gums with a length of 6 or more teeth	4500AMD	6000AMD

- The gums are printed with a layer thickness of 0,05mm.
- The gum is made of a flexible material that can be used in combination with a model material, for example, for partial or large-scale gum prosthetics.
- We work with digital impressions made with 3shape trios/iTero/Plan Scan/CareStream/Sirona/3M intraoral scanners.
- Terms for the production of works from 1 to 2 working days.



Surgical template layout with 3Shape Implant Studio

Code	Price
10026	25000AMD
10027	40000AMD



Tool rental

Code	Price
10028 Surgical set	10000AMD

Note

- Delivery and transfer of works are carried out by courier service free of charge, during the working day.
- All terms of performance of work are specified in working days, not including the days of transfer and delivery of works, as well as the order and delivery of components.
- The term for work with a length of more than 6 units is negotiated individually.
- With a significant reduction in the time for the cost of work, an additional prepayment of 35% of the cost applies.

Frame for ceramic cladding made of burn-out plastic for casting (wax modeling from customer)

Code

10013 Frame for casting

10014 Frame for casting (including casting)

Works from digital impression

700AMD

1700AMD

- The frame is printed with a layer thickness of 0,025mm.
- We work with digital impressions made with 3shape trios/iTero/Plan Scan/CareStream/Sirona/3M intraoral scanners.
- Terms for the production of works from 2 to 3 working days.

Mouth guard from biocompatible material

Code	Work from stl file	Works from digital impression
10015 Mouth guard from biocompatible material	7500AMD	10000AMD

- The guards are printed with a layer thickness of 0,05mm.
- The guard is made of biocompatible material, has a certificate of 1 class medical products security which allows contact with blood.
- We work with digital impressions made with 3shape trios/iTero/Plan Scan/CareStream/Sirona/3M intraoral scanners.
- Terms for the production of works from 1 to 2 working days.

Surgical template layouts from biocompatible material

Code	Work from stl file
10016 Surgical template layout from biocompatible material (for one implant)	12500AMD
10017 Surgical template layout from biocompatible material (for two and more implants)	20000AMD

- The surgical template layout is printed with a layer thickness of 0,025mm.
- The surgical template layout has a certificate of 1 class medical products security which allows contact with blood.
- The surgical template layout is resistant to disinfecting means, it can be sterilized in autoclave.
- We work with digital impressions made with 3shape trios/iTero/Plan Scan/CareStream/Sirona/3M intraoral scanners.
- Terms for the production of works from 1 to 2 working days.

Crown anatomical from composite biocompatible material

Code		Works from stl file	Works from digital impression	Works from stl file
10018	Crown anatomical (1 unit)	3000AMD	4000AMD	3000AMD

- The crown is printed with a layer thickness of 0,025mm.
- The crown has a certificate of 1 class medical products security which allows contact with blood.
- The crown is made of composite material with ceramic adding and can be colored with any composite paint.
- We work with digital impressions made with 3shape trios/iTero/Plan Scan/CareStream/Sirona/3M intraoral scanners.
- Terms for the production of works from 2 to 3 working days.



Temporary crown anatomical from biocompatible material

Code		Work from stl file	Works from digital impression	Work from stl file
10019	Clasps with clamps for casting	2250AMD	3000AMD	3000AMD

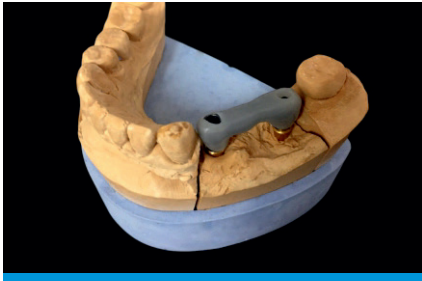
- The crown is printed with a layer thickness of 0,025mm.
- The crown is made of biocompatible material of 2a class.
- Maximum quantity in bridge is from 1 to 3 units.
- Colors by VITA scale.
- We work with digital impressions made with 3shape trios/iTero/Plan Scan/CareStream/Sirona/3M intraoral scanners.
- Terms for the production of works from 2 to 3 working days.

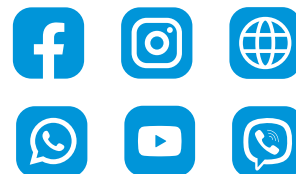


Key for abutment test

Code		Work from stl file	Works from digital impression	Work from stl file
10020	Key with extension up to 3 teeth	1500AMD	2000AMD	12500AMD
10021	Key with extension from 3 to 6 teeth	3000AMD	4000AMD	12500AMD
10022	Key with extension from 6 to more teeth	6000AMD	8000AMD	12500AMD

- The key is printed with a layer thickness of 0,05mm.
- We work with digital impressions made with 3shape trios/iTero/Plan Scan/CareStream/Sirona/3M intraoral scanners.
- Terms for the production of works from 1 to 2 working days.





Prices approved
by the General Director

K. Karapetyan _____ 01/01/2022

and are valid until _____ 01/01/2023

+ (374 11) 77 77 74
+ (374 10) 55 88 82
+ (374 96) 56 64 41

RA, 0070, Yerevan
Yervand Kochar st., 13-124

License U-XX-000376